



AUTOMATIC VALVE

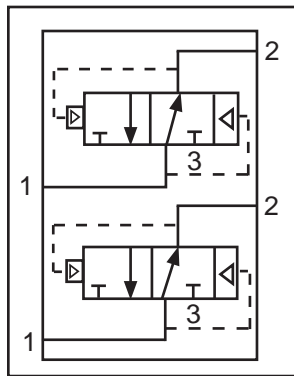
41144 Vincent Court Novi, MI USA 48375-1922

I. www.automaticvalve.com T. 248.474.6700

E. avc@automaticvalve.com F. 248.474.6732

World Class Pneumatic Solutions

New Product Release **DUAL QUICK EXHAUST: D20-063** **(CORROSIVE ENVIRONMENT)**



INDUSTRIES: Electric Test Equipment

APPLICATION DESCRIPTION: Quick Exhaust Valves are used on rotary actuators for electrical test equipment.

PROBLEM: The Customer needs to speed up cycle time and has space constraints. The valve is exposed to acid mist.

SOLUTION: Automatic Valve D20 series Dual Quick Exhaust valves are plated to resist the corrosive environment. Because they are dual exhaust valves, extra fittings are eliminated and the speed of the rotary actuator is increased. The plating holds up well and provides an attractive appearance to the package. The dual quick exhaust also has a higher flow coefficient than the previously used individual valves.

Contact the factory or your local distributor for more information.
Let us design a solution for you.